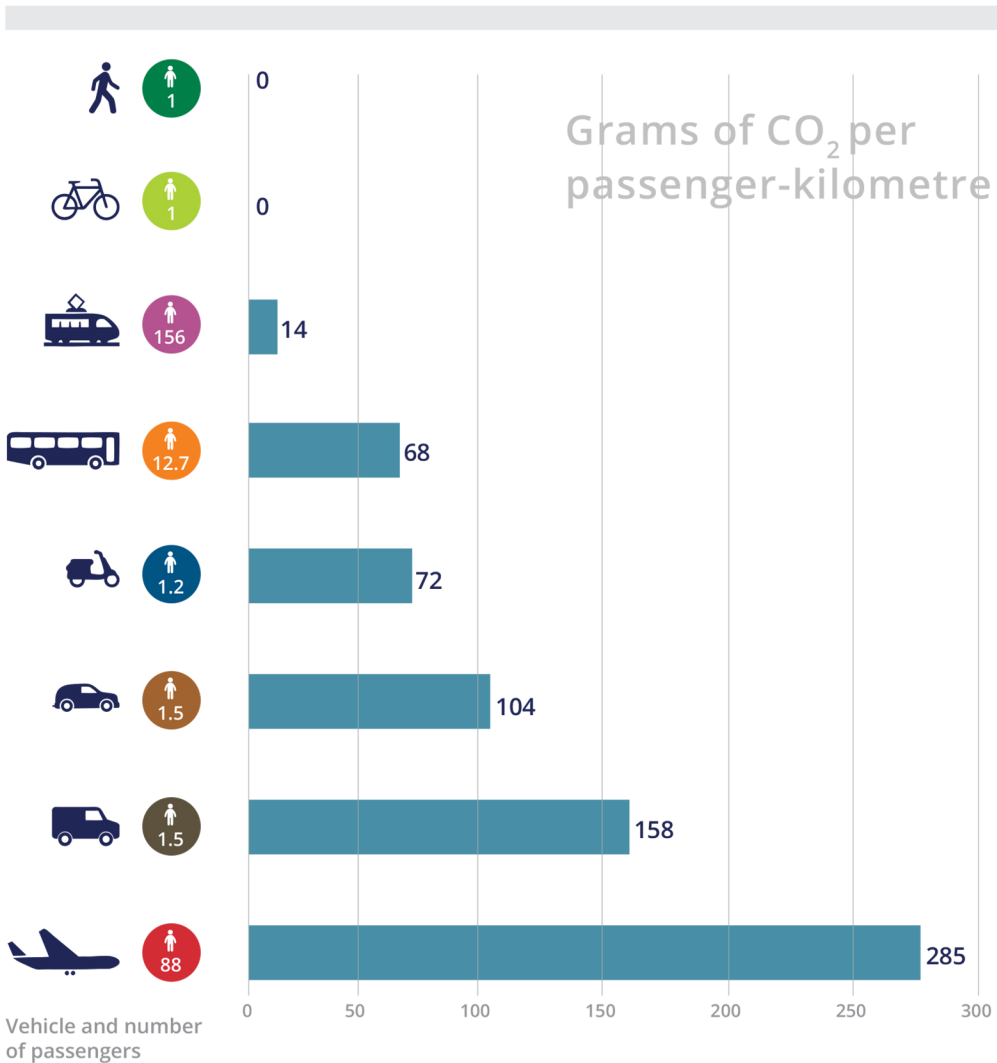


## Carbon dioxide emissions from passenger transport

A wide range of transport options exists, but choosing the one with lowest emissions is not always straightforward. One way to measure your environmental impact is to look at the CO<sub>2</sub> emissions per passenger kilometre travelled.



**Note:** CO<sub>2</sub> emissions are calculated using an estimate of the amount of CO<sub>2</sub> per passenger-kilometre. Different modes of transport are considered, with an average number of passengers per mode used for the estimates. As the number of passengers in a vehicle increases, the total CO<sub>2</sub> emissions of that vehicle increase, but the emissions per passenger are fewer. The inland ship emission factor is estimated to be 245 g CO<sub>2</sub>/km, but data availability is still not comparable with that of other modes.